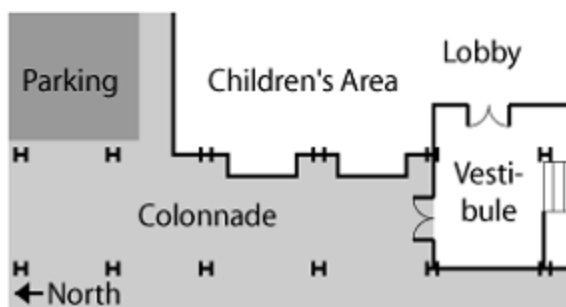




Winter, 2004

## Help Us Give a Gift of Art

The Friends are giving a beautiful gift of art to the library. The Friends' steering committee is happy to announce that we have commissioned artist Morgan Brig to create a work of art for the new library. Since the library expansion is now in the final design stage, we decided that this was our opportunity to get an artwork which could be incorporated into the architects' design. The artwork will consist of etched copper plates in the vestibule (see plan below). They will probably be located on the two pairs of doors, but the exact location may be changed as the design evolves.



Also inside the vestibule will be our beloved Charles Smith bronze sculpture, *Mother Reading with Child* (currently outside near the book drop). Outside, in the new colonnade under the canopy, will be the art installation by main project artist Katherine Kerr, planned to consist of cast bronze hands mounted on the columns, each hand holding something special, and quotations engraved in stone under your feet.

Brig was one of the three finalists in the original project artist selection process. So when the Friends decided to make a gift of art, we remembered her. Brig recently attended a Friends' meeting and everyone was enchanted by her marvelous creations in copper with a rich patina, covered with intricate images, words, and symbols. Brig, a resident of Vashon Island, grew up in West Seattle—our library was her childhood library.

Please note that, whereas Kerr's larger art installation is being paid for by the expansion project (due to the "1% for art" program), Brig's smaller artwork is being paid for solely by our little group, the Friends of Southwest Library.

**We need donations!** This artwork is will be a high quality permanent addition to our new library. The etched copper panels will be enjoyed for many decades. It is not cheap. The cost will be about \$2000. Please help us pay for this lovely gift. Donations of cash or checks may be dropped in the Friends donation box at SW Library, or mailed to the Friends. Make your check payable to "Friends of Southwest Library" (not to "Southwest Library"). The mailing address before the

library closes for construction is:

**Friends of Southwest Library**  
9010 35th Ave. SW  
Seattle, WA 98126

Donations are tax-deductible; if you include your name and address, we will send you a receipt.

## All Libraries Closed March 21-27

All Seattle Public Libraries will be closed and staff put on furlough for the week of March 21 to 27. Even the bookdrop will be closed, but your return dates will be adjusted so that you won't accumulate fines during this period. The closure is the final step in addressing the 2003 budget shortfall.

## New Building Update

Later in the spring, as the Southwest Branch prepares to close, the new High Point Library at 35<sup>th</sup> and Raymond is preparing to open. Although exact dates haven't been established yet, we expect both events to occur in early summer. And of course the West Seattle Branch in the Admiral District will reopen on April 3<sup>rd</sup>.

Bids for construction for the new Southwest Library will go out within the next month. A closing date won't be set until a final bid has been accepted. Once that happens, you will see lots of activity as we get ready for the final day.

Once we close, most Southwest staff will be deployed to neighboring libraries, so you will continue to see us at High Point, West Seattle or Delridge. [see Keeping in Touch below.] We also plan on moving some of our programs. Both afternoon and evening book discussions will move to the High Point Library, along with our annual community artists' showcase in the Fall. We are considering several sites for our popular toddler and preschool storytimes, possibly in a daycare or elementary school. Children and teens can participate in the summer reading program at any of the three open libraries in West Seattle.

## Keeping in Touch

Budget allowing, Southwest Friends intends to continue publishing this newsletter during the closure of the Southwest Branch, to keep patrons informed about the building and staff. If you know a patron who'd appreciate receiving such updates, please let them know that they can receive the newsletter at no cost (although donations are always gratefully accepted), by contacting the editor, Julie Enevoldsen (932-3741 or <j.enevoldsen@wlonk.com>).

## 2004 Priorities

At the annual steering committee retreat in January, SW Friends set priorities for the coming year. Our challenge will be maintaining the group's momentum during the closure of our library.

We hope to continue our popular fall Artists' Showcase, and are exploring the possibilities of hosting it temporarily at the new High Point Library.

(Continued on page 2)



9010 35th Ave. S.W.  
Seattle. WA 98126



FRIENDS  
of  
THE SEATTLE  
PUBLIC LIBRARY

## Friends of Southwest Library 2004 Event Calendar

April 10, Saturday	10—12 pm	<i>Monthly Meeting</i>
April 17-18	(at Magnuson Park)	<i>Friends of Seattle Public Library Book Sale</i>
May 8, Saturday	10—12 pm	<i>Monthly Meeting</i>
June 5, Saturday	10—12 pm	<i>Monthly Meeting</i>

Subsequent monthly meetings TBD

Date TBD (at High Point Library) *Community Artists' Showcase*

November: Date, Time and Location TBD *Annual Membership Meeting*

*No meetings scheduled in December*

To help patrons stay informed during the closure, we plan to increase the frequency of our newsletters, and to expand our mailing list. [see Keeping in Touch above.]

We plan to continue our advocacy and budget monitoring activities.

Budget allowing, we plan to continue our program of donating quality used children's books to Roxhill Elementary School.

### 2004 Officers

Friends of Southwest Library officers for 2004 are:

Facilitator	<b>Linda Steimle</b> (938-8207)
Co-Facilitator	<b>Julie Enevoldsen</b> (932-3741, j.enevoldsen@wlonk.com)
Secretaries	<b>Jason Gift</b> and <b>Nancy Yarges</b>
Treasurers	<b>Tina Chang</b> and <b>Nils Enevoldsen</b>

### Storage Space Needed

During the library closure, we need a place to store our book-shelf kiosk (currently at the checkout counter, with bookshelves on one side for the remainders from the Friends of SPL Book Sale, and Friends' literature on the other side. It's about 5 feet tall, with a triangular footprint, and about two or three feet on each side. We also have a couple of boxes of miscellaneous supplies and materials which need storage space. If you have a corner in your (dry) garage, basement, or back room we could use until the library reopens (2005), please contact Julie Enevoldsen (932-3741 or <j.enevoldsen@wlonk.com>).

### Website

You may also check our website, <swfriends.wlonk.com>, for calendar and other general information.